

INDEX

1.0 INTRODUCTION

2.0 AUTHORITY

3.0 SYNOPSIS

4.0 RESPONSIBILITY

- 4.1 Committee of Management
- 4.2 Flight Safety Officer
- 4.3 Flight Operations Sub Committee
- 4.4 Sub Flight Safety Officer

5.0 MEMBERSHIP REQUIREMENT

6.0 LEGALITY OF OPERATION

- 6.1 Pilot Authorisation
- 6.2 Flight Instruction
- 6.3 Aircraft Registration
- 6.4 Proof of Operational Legality
- 6.5 Member Responsibility

7.0 AIRFIELD CURFEW

8.0 FLY-INS AND EVENTS - SPECIAL PROVISIONS

- 8.1 Approval
- 8.2 Waiving of by-laws
- 8.3 Advising of Airfield Procedures
- 8.4 Appointment of Sub Flight Safety Officer
- 8.5 Reason for Sub Flight Safety Officer
- 8.6 Responsibilities of Sub Flight Safety Officer

9.0 OVERVIEW - COMBINED OPERATIONS

- 9.1 Classes of Aviation at Caboolture Airfield

10.0 AIRFIELD LAYOUT AND DESCRIPTION

- 10.1 Runways
- 10.2 Warning – 06 and 12 Threshold
- 10.3 Taxiways
- 10.4 Wind Indicators and Ground Signals

CABOOLTURE AIRFIELD OPERATIONS MANUAL

11.0 LAUNCH POINT CONCEPT

12.0 VEHICLE MOVEMENTS ON THE AIRFIELD

- 12.1 Prohibition of Vehicle Movements Generally
 - 12.1.1 In Event of an Accident
 - 12.1.2 Authorised Operational Vehicles
 - 12.1.3 Hangar Access Waiver
- 12.2 Observers to be carried
- 12.3 Carriage of Goods
- 12.4 Movement between Launch Points
- 12.5 Keys to be left in Vehicles at Launch Points
- 12.6 Restriction of Movement in Adverse Weather

13.0 PEDESTRIAN MOVEMENT ON RUNWAYS AND TAXIWAYS

- 13.1 Waiver for Hangar Access

14.0 ASSEMBLY AND DISASSEMBLY OF AIRCRAFT

- 14.1 Assembly - General
- 14.2 Assembly and Disassembly at Launch Points
- 14.3 Waiver for Trailers on the Airfield

15.0 STARTING ENGINES

- 15.1 General Constraints
- 15.2 Hand Starting
- 15.3 Aircraft Not to be Left Unattended

16.0 TAXIING PRE AND POST TAKE OFF PROCEDURES

- 16.1 Departing and Accessing Aircraft Parking Areas
- 16.2 Aircraft Not to Taxi - on Runways
- 16.3 Runway Use - Wet Weather Waiver
- 16.4 Right of Way when taxiing
- 16.5 Pre Take-Off and Post Landing Procedures
- 16.6 Special Provisions - Non Powered Aircraft
- 16.7 Special Provisions - Self Launching Gliders
- 16.8 Special Provisions - Powered Parachutes
- 16.9 Special Provisions - Gyro Craft Taxiing in Aircraft Parking Areas
- 16.10 Special Provisions - Balloons
- 16.11 Special Provisions - Hang Gliders

17.0 PARKING OF AIRCRAFT

- 17.1 Location
- 17.2 Parking at Hangars
- 17.3 Not to Park on Taxiways
- 17.4 Parking at Launch Points
- 17.5 Parking Adjacent to Taxiway/Parking Area Access Points
- 17.6 Parking Adjacent to Hangars - Specifically

18.0 OPERATING WITH MOTOR TOW OR WINCH LAUNCHING SYSTEMS

19.0 CIRCUIT REGULATIONS

- 19.0.1** Circuit Procedures
- 19.0.2** Changing Circuit Direction
- 19.1 Combined Operations - General Awareness
 - 19.1.1 General Aviation
 - 19.1.2 Ultra Lights
 - 19.1.3 Gliders and Powered Gliders
 - 19.1.4 Hang Gliders and Powered Hang Gliders
 - 19.1.5 Powered Parachutes
 - 19.1.6 Gyro Craft
 - 19.1.7 Skydiving
- 19.2 Communication between Aviation Disciplines
- 19.3 Altimeter Setting
- 19.4 Vertical Speed on Downwind Leg
- 19.5 Final Turn Minima
- 19.6 Minimum Airfield Over-fly Heights, Go-Arounds
- 19.7 Alleviating Circuit Congestion
- 19.8 Touch and Go Landings - Caution
- 19.9 Cutting Off in the Circuit
- 19.10 Pilot Selected Runways
- 19.11 Intersection Departures

20.0 JOINING CIRCUIT

- 20.1 Inbound Call
- 20.2 Information from Caboolture Ground Station

21.0 MANUAL REVIEW AND USER FEEDBACK

APPENDIX A – Airfield Plan

APPENDIX B – Plan of Local Noise Sensitive Areas

APPENDIX C – YCAB Operations Manual Quick Reference Handout (YCAB QRH)

APPENDIX D – Airfield Fly Neighbourly Commitment

APPENDIX E – Emergency Response Plan

CABOOLTURE AERO CLUB [INC]

CABOOLTURE AIRFIELD OPERATIONS MANUAL

1.0 INTRODUCTION

The purpose of Caboolture Airfield, and its controlling body which will be referred to below as the Caboolture Aero Club (CAC), is to maintain an on-going facility for flying training, recreational flying and other flying related operations as approved by the CAC Committee from time to time. Preservation of this asset will be achieved by users understanding and complying with this **Operations Manual (OM)**.

Users of the airfield will understand that non-compliance with published operational requirements, this manual, and disregarding of day to day issues (e.g. noise) directly impacts positively on the tenure of the lease of the parcel of land known as the Caboolture airfield and its continued use for GA and recreational aviation activities.

This document seeks to promote the safe interaction between disparate aviation activities. It is important that all Caboolture airfield users are cognisant of the peculiarities of these various aviation related activities, and maintain a courteous and tolerant attitude in the interest of safety and good relations.

2.0 AUTHORITY

This manual is issued by authority of the Caboolture Aero Club Inc. as the leasee, operator and manager of the Caboolture airfield and by the authority invested in the CAC Management Committee by the Caboolture Aero Club Inc. Rules of the Association - Section 4(2)(d) Powers and Moreton Bay Council (formerly Caboolture Shire Council NOTICE OF CONSENT No 1365 dated 14th April 1999. The OM, does not have greater authority than the Caboolture Aero Club Constitution, Rules of the Association, the Airfield Head Lease, Local Government Notice of Consent or Australian Civil Aviation Legislation.

IMPORTANT NOTE

The operational and user access requirements of this OM are additional to Civil Aviation Safety Authority (CASA) regulations and/or those rules issued from time to time by a CASA approved aviation management organisation.

Membership of the Caboolture Aero Club and/or access to Caboolture airfield (YCAB) is contingent on the CAC member, airfield access agreement holder or the airfield user (THIS INCLUDES VISITING PILOTS) operating in accordance with the requirements of this OM and all other State, Local Government and Civil Aviation Legislation.

The version of this OM published on the Caboolture Aero Club Inc. website is the definitive/source document. This OM becomes an uncontrolled document when printed.

WARNING

All forms of flight and aviation related activities are potentially hazardous. The risks and hazards associated with flying and accessing an airfield are real and all participants must inform themselves of the possible risks involved. All persons participating in aviation activities at YCAB do so at their own risk.

3.0 SYNOPSIS

A synopsis of this manual is given at Appendix C – YCAB Quick Reference Handout. This shall be used as a quick reference guide (QRH) for the initial orientation of airfield users, and may be reproduced without CAC Committee approval as additional handout or educational material with newsletters and other posted information notifying of fly-ins and other events from time to time.

4.0 AIRFIELD MANAGEMENT RESPONSIBILITY

4.1 Airfield Management - Overall responsibility for operational conduct and lease agreement compliance is vested in the Caboolture Aero Club Committee of Management.

4.2 CAC Airfield Reporting Officer (ARO) - Day to day management of the airfield including operational activities is vested in the Caboolture Airfield Reporting Officer or his/her delegate. The ARO will monitor ongoing and changing operational requirements, member and other user adherence to the requirements of the OM. The ARO will initially investigate reported breaches of the manual or reported operational incidents. The Airfield Reporting Officer will maintain a log of OM breaches, incidents and accidents and report same to the management committee each month or sooner if warranted.

4.3 Airfield Emergency Response Plan

The CAC airfield emergency response plan provides guidance in the event of an

- Aircraft incident
- Aircraft accident
- Fire or other emergency
- Natural disaster
- Unlawful action affecting operations

As a first responder you may find yourself in a position where it is necessary to take immediate action. **Follow these three basic emergency action steps** and then refer to the **CAC Emergency Response Plan (ERP) Appendix F** for further action and guidance.

1. **Check**, the scene (is it safe?) and the victim/s (if any) - but most importantly make sure you as the first responder stay safe;
2. **Call, 000 first** to activate the EMS system and then call the **CAC Airfield Reporting Officer (ARO) on 0488 922 245**;
3. **Care**, for the victim/s and protect the site, to the best of your ability, until help arrives.

The role of CAC in such matters is to ensure the safety and security of airfield users, airfield operations, and club and member assets.

CABOOLTURE AIRFIELD OPERATIONS MANUAL

5.0 Airfield Access

Visitors are welcome and are an integral part of airfield activities. Individual permission to land and take-off is not required. Persons who frequently, or regularly use the airfield are required to apply for Full Club Membership. Persons who wish to use the airfield for a period of time, but would not normally base themselves at the airfield (e.g. a pilot under training at a flying school) are encouraged to apply for Social Membership of the Club.

Any individual, organisation, business, club or association wishing to operate or conduct an aviation related activity (*for the purposes of this OM an aviation related activity includes not for profit organisations*) from Caboolture airfield, must apply in writing to the CAC for approval to operate from YCAB and complete an Airfield Access Agreement with CAC. Full details of the type of operation proposed, along with hours of operation, aircraft type (if any), and personnel and their contact numbers/address etc. who constitute the management of or the responsibility for the conduct of the activity is to be supplied to the CAC.

The committee will consider each application on its merits and advise the applicant in writing whether airfield access approval is granted or refused.

6.0 LEGALITY OF OPERATION

6.1 Pilot Authorisation - It is a requirement of the airfield lease that all pilots operating from the airfield must be currently licensed with CASA; or have a current pilot/student authority issued by their national controlling aviation organisation and be a member of the CAC. (*The requirement to be a CAC member excludes visiting or itinerant pilots*)

6.2 Flight Training - Flight instruction at YCAB is not permitted unless it is delivered by a CAC approved Flight Training School, with a current airfield access agreement and the training activity is under the direct supervision of an appropriately licensed or certificated flying instructor.

6.3 Aircraft Registration - It is a CAC requirement that any aircraft operating at YCAB must, as appropriate, be registered with CASA or the CASA approved national recreational aviation controlling authority.

6.4 Carriage and Use of Aircraft Radio – Reserved (Refer also to Section 10.9)

6.5 Proof of Identification - Any airfield user operating at YCAB must provide, if requested to do so by the ARO or a member of the CAC Committee, evidence of registration, licencing or certification in accordance with the requirements to operate at YCAB documented in this OM. Refer to Section 5.

6.6 Member Responsibility - This OM has been developed to ensure all members co-exist safely and harmoniously. It is the collective responsibility of all users to ensure that we do not breach the provisions of the airfield head lease or the conditions detailed in the Local Government Notice of Consent. Ultimately, these factors rest on the willingness of all members to use the facility responsibly and comply with the requirements of this is OM for the good of the general membership and the protection of our airfield tenure.

CABOOLTURE AIRFIELD OPERATIONS MANUAL

If an individual or an approved organisation does not act responsibly, or acts in manner that, in the opinion of the CAC Committee, is in conflict with the CAC constitution, CAC rules, Local government Notice of Consent or this OM, and thereby puts the airfield head lease and/or recreational use of the airfield by the membership at risk, then the CAC Committee will act firmly to remove the offender's access privileges and/or terminate CAC membership. (CAC Rule 38)

7.0 AIRFIELD CURFEW

Departures or arrivals are permitted from 10 min after first light to 10 min before last light unless otherwise approved by the CAC Committee. Flying training or circuit practice is permitted from 0700 hrs EST until 10 min before last light. Noise sensitive areas marked on the map at Appendix A and are to be avoided. Pilots shall exercise discretion when conducting repeated circuits. Several aircraft each performing a single circuit has the same impact on local residents as one aircraft flying repeated circuits.

7.1 Airfield Lighting - Reserved

8.0 FLY-INS AND EVENTS - SPECIAL PROVISIONS

8.1 Approval - Application for approval to hold a fly-in or special event must be made in writing to the Committee of Management of the Club no later than 2 months before the desired date of the occasion.

Details of the proposed event must be supplied at the time of application (e.g. probable number of participating/visiting aircraft, proposed flying activities, siting of any structures/equipment upon active parts of the airfield, airfield access requirements for supporting groups or vendors etc.). Details must include steps undertaken by the applicant to ensure that airfield users have continuing use of the airfield equitably *iaw* with normal operating procedures.

8.2 Advising of Airfield Procedures - Implicit with the granting of approval to hold a flying activity or special event is the co-operation of the organizing body in the dissemination of information to participants regarding this OM. The organising body will inform attending pilots of the YCAB OM requirements. This may be achieved by including copies of the synopsis of this OM (YCAB QRH) at Appendix C. Organisers should check with the CAC Airfield Reporting Officer and the CAC website for the current version of the CAC OM.

8.3 Appointment of an event Safety Officer - The application for approval to hold a fly-in or an event shall be accompanied by the nomination of a person to act as the event Safety Officer for the duration of the activity. The nominee shall have a sound knowledge of OM and the CAC Emergency Response Plan and be a member of CAC, other than a Temporary Member (except by special written approval of the CAC Committee).

The nominee will have the ability to communicate and enforce the need for adherence to CAC OM requirements to visiting pilots of the particular group(s) concerned, and individual members or guests who may not be familiar with or knowledgeable of, YCAB's combined operating procedures.

CABOOLTURE AIRFIELD OPERATIONS MANUAL

8.4 Accident/Incident procedure – CAC has an Emergency Response Plan and the first point of contact is the Airfield Reporting Officer.

The event Safety Officer will be responsible for ensuring that in the event of an accident, breach of flying regulations, or breach of Club rules, that relevant regulatory, OM and CAC emergency response plan procedures and reporting requirements have been adhered to. The event Safety Officer will also inform the ARO in writing within 48 hours of the time of the accident, or breach, with the name of the pilot, the aircraft registration and type, names and addresses of third parties involved, confirmation of current licensing of the pilot in command, membership status of the pilot in command, and an adequate description of the circumstances of the accident or breach.

9.0 OVERVIEW - COMBINED OPERATIONS

For the purposes of this OM a combined operation is one in which aircraft with varying operational and performance capabilities are able to operate normally in company with aircraft of a quite different aviation disciplines in the circuit and proximity of YCAB e.g. powered and non-powered aircraft, helicopters and powered parachutes.

Safely integrating multiple aircraft types at an ALA is dependent upon two factors:

1. **Situational Awareness** - of the various aircraft types, having consideration of performance, operational, technical and legal constraints e.g. carriage and use of radio. Refer to the current version of CAAP 166-1 and CAAP 166-2. If in doubt communicate.
2. **Observation/Separation**, where to look for other aircraft in the circuit based on speed, performance, shape and size, and being able to predict what they will do in order to maintain safe separation circuit entry, for take-off and landing.

Intending users of the airfield should therefore take note of the following, which may or may not be in operation, but are permitted to operate under the Aero Club's Constitution.

9.1 Classes of Aviation at Caboolture - GA (All categories up to 5,800kg MTOW, inclusive of helicopters, except RPT); light sport aircraft, ultralight aircraft, weight shift aircraft (trikes), gyrocopters, gliders, hang gliders, and powered aircraft that may be operating in an "engine off" configuration); powered parachutes, balloons & airships.

WARNING

There may be further restrictions on operations by some of these aircraft e.g. GA banner towing, glider aerotowing (parallel operations), powered parachutes (take-off/landing, manoeuvring) and gyrocopters (main rotor spooling up) areas. These restrictions will be issued from time to time to operators of those aircraft by the CAC committee.

10.0 AIRFIELD LAYOUT AND DESCRIPTION

The airfield was built on low lying semi marshland. The runways although grass, are built to a high standard and are well profiled for drainage. All runways are level and firm. Only after prolonged heavy rain are the runways and taxiways likely to soften and be adversely impacted by relatively heavy aircraft (>1,500 kg MTOW). Pilot discretion is required when operating from the airfield after heavy rain. Runways marker cones (primary, cautionary and restrictive) must be observed and complied with at all times.

Circuit height for YCAB is 1000ft AGL for all aircraft except Gyros, or as per CASA published guidance for operations at a non-towered ALA for the particular aircraft type. Low level circuits are permitted by gliders and gyrocopters or by other aircraft when conducted *iaw* an approved syllabus of flying training or the approved self-administering organisation's operations manual.

10.1 Noise Abatement – Noise sensitive areas are the housing estates north and west of the airfield and these must be avoided at all times (emergencies excluded). Plan a close base when landing on Rwy 06 to avoid overflying the hospital, house and schools to the west. Do not land in the undershoot area of Rwy 06. When taking-off from Rwy 24, turn left at 500' AGL to avoid housing at the end of the runway. When taking-off from Rwy 30 turn right at 500' AGL to avoid housing on the western side of the highway.

NOTE

- 1. INTERSECTION DEPARTURE ON ANY RUNWAY IS NOT PERMITTED (Refer to subsection 10.5 and Local Government Notice of Consent section 3(a)(i)).**
- 2. Straight-in approaches are not permitted on Runway 12 or Runway 06, in order to avoid flying over populated areas (Local Government Notice of Consent section 3(a)(i) and clause 10.1 above). Straight-in approaches are not permitted on Runway 24 or Runway 30 during periods of high traffic activity. (Refer to clause 19.10 below)**
- 3. When operating from runway 24 refer to EnRoute Supplement (ERSA) NOISE ABATEMENT PROCEDURES regarding limitation on departures.**

10.2 Runways - Readers are referred to Appendix A of this OM for an airfield map. The map is to be used in conjunction with this information.

10.3 Runway Distance - The longest runway is 30/12 at 1250 metres threshold to threshold. The undershoot area of Rwy 30 may be used WITH CAUTION to extend the available take-off distance (TODA) to approx. 1600 metres. Runway 06/24 is shorter at 850 meters, threshold to threshold. The undershoot area of Rwy 06 may be used WITH CAUTION to extend the available take-off distance (TODA) to approx. 1450 metres. All runways are grassed natural surfaces and are usually firm even after rain (refer also to Section 10.0). Parallel helicopter operations can be expected at any time on all runways. (refer to subsection 10.5). Parallel gliding operations can be expected on Rwy 06 and Rwy 12 (refer to subsection 10.6 and 19.2(c)).

CABOOLTURE AERO CLUB [INC]

CABOOLTURE AIRFIELD OPERATIONS MANUAL

Taxiways and grass apron areas may be soft in places after rain. Slope of runways is less than 1% and the thresholds of all strips and designated taxiways are clearly marked.

10.4 Run-up bays – Are provided in proximity to the threshold of Rwy 06, 30, and 12.

Parking of aircraft is not permitted in close proximity to run-up bays. Users are encouraged to use run-up bays provided in order to minimise damage to the airfield's grass surfaces, and other aircraft.

10.5 Intersection Departures - for noise abatement and safety of flight reasons (e.g. loss of engine power on take-off), intersection departures are not permitted on any runway.

10.6 Helicopters - due to their higher noise footprint are required to arrive and depart from the east. Helicopter flying training and general helicopter operations can be expected at any time during daylight hours.

Parallel helicopter operations are approved at YCAB. On Rwy 06 - Grass Left, Rwy 12 – Grass Right, Rwy 24 - Grass Right and Rwy 30 - Grass Left. Refer also to Section 7.0.

10.7 Gliding - operations including glider flying training can be expected at any time during daylight hours. The glider tow aircraft and the gliders broadcast location and intentions on the YCAB ALA VHF frequency in accordance with guidance published in CAAP 166-1 and CAAP 166-2 as amended from time to time.

Gliders (and the tow aircraft) are permitted to do non-standard circuits and conduct emergency upset training in close proximity to the airfield however, the PIC of the glider or the tow aircraft will broadcast their intentions on the YCAB VHF frequency prior to conducting a non-standard activity and must avoid noise sensitive areas at all times.

10.8 Wildlife Hazard - KANGAROOS and large **BIRDS** may be on the ALA operational areas at any time. Pilot caution must be exercised at all times.

10.9 VHF Communications – YCAB is not a registered or certified airfield. The airfield is subject to heavy circuit activity, particularly on weekends and is located within a busy training area that is also used by Caloundra and Redcliffe aerodromes. A high level of training activity and VHF communication exists within this broadcast area and the carriage of a serviceable VHF radio is strongly recommended. If the carriage and use of VHF radio becomes an operational requirement, such requirement will be published in this manual and ERSA. (Refer also to subsection 9.0 - Situational Awareness).

WARNING

Runways and particularly the taxiways are not suitable for heavy or higher thrust aircraft (> 5,800 kg MTOW [e.g. KINGAIR 350]), or those using high-pressure tyres. The Club does not encourage the use of the airfield by these types of aircraft and pilots of these aircraft types are requested to obtain a briefing on the status of the airfield from the airfield reporting officer and prior permission to operate from the ARO.

CABOOLTURE AIRFIELD OPERATIONS MANUAL

Pilots of such aircraft types, if permission is granted to operate, use the airfield at their own risk and must comply with YCAB noise abatement requirements. The Club will require any damage caused to the airfield surfaces by such aircraft types be promptly repaired at the expense of the aircraft's registered operator. If the aircraft's registered operator or pilot in command is unsure that the runways, taxiways and natural earth parking areas will support the aircraft, then YCAB airfield must not be used.

10.10 Taxiways – all runways are accessible by formed and clearly marked taxiways. While the CAC OM requires landing aircraft to expedite their exit from the runway onto a designated taxiway, pilots are reminded that the taxiways are susceptible to wet conditions.

In deference to avoiding unnecessary surface wear, or for reasons of aircraft operational safety, it is acknowledged that a pilot may have to backtrack on a runway or extend their ground run on landing in order to reach a suitable access point to a taxiway or parking area. In such cases pilots must be sensitive to circuit traffic and broadcast their intentions on the YCAB VHF frequency.

Pilots should also note that most of the taxiways are edged with surface drains, between the taxiway and parking areas, or taxiways and runways through which it is not possible to taxi. Care should be taken when departing a runway, or a taxiway to enter a parking area. Use only the clearly marked or mown areas to avoid damage to your aircraft.

10.11 Wind Indicators and Ground Signals - The PRIMARY windsock **White** is positioned at the runway intersection of 06/30. SECONDARY windsocks **Yellow** are mounted on the approach to Rwy 06 and Rwy 12.

Airfield advisory ground symbols will be displayed adjacent to the main windsock. It is unlikely that inbound pilots will see any other ground symbol displayed adjacent to the primary windsock other than the 'Gliding in Progress' symbol which is a double white cross **(++)**. Note however, that gliders may still be encountered when the symbol is not on display if a glider, on a cross-country flight, flies into the airfield and the local gliding operation is not active. For this reason, the gliding in progress symbol is permanently displayed by the primary windsock.

11.0 LAUNCH POINT CONCEPT

Most pilots will be accustomed to airfield operations being at a central point or parking area from which aircraft taxi to and from active runways. At a recreational aviation ALA there are many aircraft types that are unable to taxi (gliders, hang gliders, motorized parachutes). Equally, these types require all of the TODA in front of them for their various modes of take-off. To make the operation of such types practical as well as safe as possible, an operating base may be established by the support crew near the threshold of the most suitable runway for the activity. This is termed the launch point.

The launch point is usually established at a point on the airfield that minimises the time and effort required to retrieve the aircraft after landing, and remain clear of the active runway so that the launch crew or parked aircraft do not to impede landing or taxiing aircraft. The central feature of “launch point control” is usually a motor vehicle or in the case of YCAB a modified white painted caravan. The surrounding area is mown and provides parking for essential support vehicles and parked aircraft.

CABOOLTURE AIRFIELD OPERATIONS MANUAL

The launch point control vehicle is set-up with briefing facilities for training, a shaded rest area, a secondary wind indicator, and a base VHF radio station. This concept also allows for flexibility for these operations however, sighting for flexibility will always be secondary to safety and good airmanship.

Pilots unfamiliar with having people, aircraft and vehicles on the movement areas of an airfield should understand some of the consequences. When approaching to land you may experience aircraft that have previously landed continue on to the obvious central point of the airfield; alternatively, if they are operating from the launch point then you may find that they will stop on the runway, turn around, and then taxi back towards you or be retrieved by a motor vehicle. You may experience other aircraft lining-up parallel to but clear of the designated landing strip in preparation for take-off.

This should be on the side of the runway well clear of the designated landing strip. If the aircraft is operating with its engine running the PIC is expected to broadcast their intentions on the YCAB VHF frequency.

12.0 VEHICLE MOVEMENTS ON THE AIRFIELD

Warning

A vehicle is not permitted to cross a runway when an aircraft is established on final to land on that runway (refer to subsection 12.2)

12.1 Vehicle Movements

- 12.1.1** Only motor vehicles approved by the CAC for airfield access may enter the secure airfield precinct using one of the security controlled motor vehicle access gates. A gate access card will be issued to members who have applied for and been granted airfield motor vehicle access approval. The approved motor vehicle must display on the vehicle's windshield a CAC issued motor vehicle access pass. Tailgating in order to gain access is prohibited.
- 12.1.2** The maximum speed for all motor vehicles operating on the airfield is 20kph. Drivers must obey all airfield signs and notices and any reasonable instructions given by the Airfield Reporting Officer.
- 12.1.3** The operator of a motor vehicle on the airfield must hold a current drivers licence.
- 12.1.4** Any motor vehicle not registered with the Qld Department of Transport for road use must be approved for operation on the airfield by the CAC. The motor vehicle will require an annual declaration of roadworthiness from the owner of the vehicle.
- 12.1.5** Motor vehicles must not operate within 10m of an aircraft that is refuelling or an aircraft that has its engine/s running. If the aircraft engine/s is running the motor vehicle must pass behind the operating aircraft.

12.2 Prohibition of Vehicle Movements - *Generally* vehicles shall not drive on a designated runway or their respective undershoot area.

CABOOLTURE AIRFIELD OPERATIONS MANUAL

Refer also to clause 12.2.1, clause 12.2.2 and clause 14.3. A vehicle is not permitted to cross a runway when an aircraft is established on final to land on that runway.

12.2.1 In Event of an Aircraft Accident - In the event of an aircraft accident vehicle restrictions may be overruled by the ARO in favour of emergency response vehicles and accident rescue considerations. Vehicles used under this consideration must have all available lights illuminated and persons participating in rescue activities must take every precaution to ensure the vehicle and their movements do not present a further obstruction of runways or taxiways. (refer to subsection 4.3 and Appendix F)

12.2.2 Authorised Operational Vehicles - Are permitted to operate on dedicated taxiways, and in some cases the runways, when they are engaged in tasks associated with the airfield operation(s). Such vehicles would comprise - mowing equipment; vehicles engaged in a runway inspection; vehicles retrieving or towing aircraft; and vehicles driven by instructors engaged in aviation supervisory activities.

These vehicles must display a flashing anti-collision light or flashing hazard lights when operating on the airfield movement areas, taxiways or runways and must be operated in a manner that does not present a risk to aircraft or other airfield users.

12.2.3 Hangar Access - Vehicles may access aircraft hangars by driving on the internal roadway/taxiways of the airfield. Drivers must obey all airfield signs and notices and any reasonable instructions given by the Airfield Reporting Officer (ARO) when operating a motor vehicle on the airfield.

12.3 Carriage of and/or Delivery of Goods - Expressly confined to aircraft parking areas and tie-down points, private or commercial vehicles may enter into such areas for the purpose of positioning trailers for loading/off-loading aircraft, and/or to deliver goods, provisions, equipment or persons to or from parked aircraft or hangars. Access for commercial or heavy vehicles must be arranged with the CAC Committee - prior permission is required.

12.4 Movement Between Launch Points - Vehicle movements, other than operational vehicles engaged in their duties, shall only move to, from and between launch points by taxiways or designated perimeter or access tracks. A vehicle is not permitted to cross a runway when an aircraft is established on final to land at that runway.

12.5 Keys to be Left in Vehicles at Launch Control Points - Parking of vehicles at launch control points is conditional upon the vehicle's keys being left in the ignition. In the event of a wind change requiring a change of a launch control point or an on field incident or accident, all vehicles must be capable of being moved from the launch control point being while the owners are flying or otherwise absent. There will be no exceptions to this operational requirement. Any member who does not wish to comply with this CAC OM requirement must park their vehicle at a designated airfield central parking area.

CABOOLTURE AIRFIELD OPERATIONS MANUAL

12.6 Restriction of Movement in Adverse Weather – Motor vehicles will be prohibited from the airfield precinct if their movement is likely to damage or erode the airfield or access track surfaces.

Typically, this will be after rain however, in times of very dry conditions vehicle access may also be restricted to avoid excessive damage to grassed surfaces and the creation of excessive dust.

12.7 Parking of vehicles on Airfield – Parking on taxiways is not permitted at any time. Parking inside a hangar, between hangars or in designated parking areas is permitted however, users must be cautious of underground storm water drainage systems in grassed areas between hangars.

Parking at least 15 metres from the edge of a taxiway so as to allow aircraft free movement on a taxiway is required. In some areas taxiways pass close to aircraft hangars and the 15 metre clearance mentioned above is not possible. In such cases vehicle are not to be parked so that they impact on the available clearance between a hangar and the taxiway. In all other circumstances vehicles must only be parked in designated vehicle parking areas. Refer also to Section 11.0 and subsection 12.2.

12.8 Heavy Vehicles - Heavy vehicle access to the airfield requires prior approval of the CAC Committee. An approved heavy vehicle must be escorted by the ARO, a Committee Person or a person authorised by the Committee for the purpose. Also refer to sub section 12.3.

12.9 Parking of Trailers – Parking of trailers associated with an aircraft or aviation related activity is restricted to the owner’s hangar or the airfield designated trailer parking facility.

13.0 PEDESTRIAN MOVEMENT ON RUNWAYS AND TAXIWAYS

Pedestrian movement on runways and taxiways is prohibited except in case of an emergency, for the conducting of an airfield inspection, when the persons are involved in the manoeuvring of non-powered aircraft e.g. a glider, or are engaged in duties associated with launching of non-powered aircraft, or in the support of aircraft incapable of independent taxiing, or for the purposes of conducting a CAC approved aviation activity. A CAC approved activity includes pedestrian access to and between airfield hangars.

14.0 ASSEMBLY AND DISASSEMBLY OF AIRCRAFT

Subject to waivers at 14.2 below, aircraft shall be assembled and/or disassembled only on the aircraft parking areas. Refer also to subsection 12.9.

14.1 Aircraft Assembly General - Aircraft trailers shall only be taken into aircraft parking areas which are designated as assembly/disassembly locations (See Airfield Plan at Appendix A). Trailers may be left parked in situ while flying but members must take all reasonable precautions to ensure that the movement areas of the airfield are not impeded. Refer also to subsection 12.9.

14.2 Assembly and Disassembly at Launch Points - no aircraft shall be assembled or disassembled at an airfield launch point.

CABOOLTURE AIRFIELD OPERATIONS MANUAL

The only exemption from this direction are those aircraft that are dependent on a trailer for mobility (e.g. gliders, hang gliders, powered parachutes and some trailered LSA aircraft). Trailers must not be taken beyond designated motor vehicle or trailer parking areas.

Balloon recovery vehicles may be taken onto the airfield for balloon assembly, inflation, launching and/or recovery but shall comply with clause 16.10 herein. Prior permission of the CAC Committee is required by the balloon operator for each aviation activity.

14.3 Waiver for Trailers on the Airfield - In the event that an aircraft (normally moved by hand, towed by a vehicle or which usually moves under its own power) becomes immobile, or movement by conventional means would cause damage to the aircraft or the airfield, then a trailer or other suitable apparatus may be taken onto the airfield for the purpose of moving the obstruction. The requirements of sub section 12.8 must also be complied with.

15.0 STARTING ENGINES

All operators must be mindful that Caboolture is a “recreational aircraft and people place”. Consideration must be made by all pilots, especially those operating aircraft with higher performance engines of the impact their operation might have on smaller and lighter aircraft.

Particular care must be exercised so that an aircraft is positioned “pre-start” such that propeller wash does not blow into another other person’s hangar, the aero club facilities, aircraft tiedown areas, car parks, aircraft that are being assembled, disassembled or otherwise worked on, or onto any other aircraft, especially very light aircraft.

15.2 Hand Starting - An aircraft that is to be started by hand, without a pilot occupying the control seat, must be restrained by wheel chocks or a serviceable parking brake system - preferably both.

15.3 Aircraft Not to be Left Unattended - No aircraft, whether secured by brakes, chocks, or other means shall be left without an appropriately trained pilot occupying the control seat of the aircraft while the engine is running unless there is provision made in the aircraft POH or flight manual for such action.

16.0 TAXIING and PRE AND POST TAKE - OFF PROCEDURES

For the purpose of this clause non-powered aircraft being taken to and from a launch point or recovered from a runway (e.g. a glider being towed by a motor vehicle) is deemed to be taxiing.

16.1 Departing and Accessing Aircraft Parking Areas - Aircraft shall depart from and returning to an aircraft parking area via the taxiway entry point nearest to where their aircraft is or shall be parked. Pilots must plan their taxi routes such that the bulk of movement occurs on the designated taxiways. Taxiing within the designated aircraft parking areas must be minimized and the minimum of power used for safe operations used at all times. Refer also to Section 15.0.

16.2 Aircraft Not to Taxi on Runways - Aircraft must, whenever practical and safe to do so, taxi on designated taxiways.

CABOOLTURE AIRFIELD OPERATIONS MANUAL

At the discretion of the pilot in command, according to weight and aircraft type, and operational requirements the runways may be used for taxiing and/or backtracking at times when the taxiways have become waterlogged or the ground surface is soft enough to sustain aircraft induced damage. Pilots of aircraft with tailskids must exercise additional care.

Also refer to the WARNING after sub section 10.9.

16.3 Right of Way when Taxiing - Pilots shall conform to CASA operational requirements as they relate to aircraft right-of-way rules. Pilots must also give way to any aircraft exiting a runway in order to assist in expediting the aircraft's exit from a runway.

An aircraft exiting a parking area must give way to an aircraft moving on a taxiway. Adequate clearance must be given to enable the aircraft on the taxiway to enter the parking area via the access point.

16.4 Pretake-off and Post Landing Procedures - All pretake-off and post landing procedures shall be conducted in the areas provided or on grass surfaces such that the aircraft does not obstruct other traffic or airfield users. Aircraft shall not enter the runway for take-off without first having positioned such that the approach and the base leg of circuit are in clear view and must enter the runway from that position only when they are ready for an immediate take-off, having checked that no other aircraft is on final approach or is still occupying the runway.

Aircraft shall obey the standard Rule of the Air of 'giving way to aircraft' established on final.

After landing, aircraft shall expedite vacating the runway.

16.5 Special Provisions - Non Powered Aircraft - After landing a non-powered aircraft must be immediately cleared from the runway along a path at 90° to the runway centre line. If necessary pilots must do this by themselves so that the active runway landing strip does not become unavailable to other circuit traffic.

16.6 Special Provisions - Self-Launching Gliders - Pilots of large and heavy self-launching gliders that are difficult to move quickly by hand, and/or require a substantial engine warm-up period after an engine-off landing so that sufficient power may be used to taxi the glider, must either plan their circuit such that the runway is not obstructed to the inconvenience of other users, or land long and vacate the runway at the runway intersection using their own momentum, or restart the engine in flight and land "engine-on" such that taxiing may be commenced immediately after landing. Self-Launching gliders incapable of independent taxiing will be treated as non-powered aircraft and must comply with the requirements of sub clause 16.5.

16.7 Special Provisions - Powered Parachutes – YCAB has suitable grassed take-off and landing areas for use by powered parachute operators such that they should not find it necessary to depart from or land on a designated runway. Powered parachutes are permitted to operate at YCAB, on a case by case basis, and must not inconvenience other airfield users. Each powered parachute operator must be a CAC member and each must have prior approval in writing from the CAC committee to operate.

CABOOLTURE AIRFIELD OPERATIONS MANUAL

16.8 Special Provisions - Gyrocopters Taxiing in Parking Areas - Gyrocopters must not taxi in designated aircraft parking areas with their main rotor blades turning unless they maintain two rotor diameters distance clear of the nearest rotor blade tip and any person, aircraft, vehicle or structure. This clause does not apply if the main rotor blades are not turning. Refer also to Section 15.0.

16.9 Special Provisions – Balloons - Balloons may only assemble and launch from areas of the airfield that do not comprise taxiways or designated runways. Access to suitable areas must not be via runways or taxiways. Balloon operators note that the (present) areas of runways 12/30 and 06/24 designated on the airfield plan as 'emergency areas' may be used for balloon assembly and launching subject to provisions below.

Selection of an assembly and launch area must take into account the departure direction of the balloon and shall not result in the balloon crossing an active runway, final approach or extended centre line below a height of 500' AGL. Each Balloon Operator must have an airfield access agreement with the CAC or Committee prior approval to operate.

NOTE

Operation of Hot Air Balloons is expressly prohibited during times of fire hazard. Balloon operators are advised that the airfield is located in an extremely dry area and any long grass is a fire hazard, unless well soaked by rain - particularly during inflation of a balloon, or if a balloon topples whilst being erected or launched. This is not to say that a balloon operator may not negotiate with the CAC Committee for a designated mown launch area or prepare adequate approved launching areas themselves.

16.8 Special Provisions - Hang Gliders/ Powered Hang Gliders - Hang Gliders are not permitted to operate at YCAB using winch launch or motor tow launch facilities. The provisions of sub section 16.7 will also apply to the operator of a powered hang glider.

17.0 PARKING OF AIRCRAFT

17.1 Location - Aircraft must be parked in designated aircraft parking areas and tiedown areas, inclusive of those at launch points.

Under no circumstances is a pilot to occupy a tie down area that has been allocated to and labelled by a resident operator/aircraft owner. If you are unclear where to park, you must seek advice from the ARO, a committee member or one of the resident flying schools as to an appropriate area to park and tiedown your aircraft. Offenders may be removed from the area and denied future access to the airfield.

17.2 Parking at Hangars - Owners of, and visitors to, hangars must not leave their aircraft parked such that they impinge on hangar access or hangar taxiways.

17.3 Parking on Taxiways - Aircraft must not be parked on taxiways, excepting non-powered aircraft queuing for launch at launch points, but only when another taxiway servicing the active runway is available to users.

CABOOLTURE AIRFIELD OPERATIONS MANUAL

17.5 Parking Adjacent to Taxiway/Parking Area Access Points - Users at Caboolture must be aware of the variety of aircraft types using the airfield and their individual operational needs. Some gliders and self-launching gliders have wingspans in excess of 25 metres (76 feet) and require significantly more clearance for safe operations than GA and recreational aircraft types. To allow sufficient clearance for the movement and operation of large wing span aircraft, users must park a distance from their nearest wingtip to a taxiway/aircraft parking area access point of not less than 15 metres.

17.6 Parking Adjacent to Hangars - In consideration of hangars being used by aircraft, (especially large wing span aircraft) or reasonable access being required by flying school operators to embark and disembark students who may have control of the aircraft, airfield users are asked to exercise common sense. Adequate space in which to manoeuvre an aircraft is required, particularly for abinitio students under instruction. It may be that your aircraft could be struck in passing by an aircraft under the control of a student, novice solo pilot, or a less than attentive pilot.

As a guide and for the purposes of this OM it is recommended that adequate space for safe ground operations in the hangar precincts would be a minimum of twice the wingspan of a Cessna 172, Piper Comanche or a SE Bonanza aircraft, between your own aircraft and other aircraft or a fixed structure. In the case of flying school hangars, sufficient manoeuvring space shall be left for normal student taxi training activities.

18.0 OPERATING WITH MOTOR VEHICLE OR WINCH LAUNCHING SYSTEMS

Launching of an aircraft by motor vehicle towing, winch launching, or reflex cable launching is not permitted at YCAB.

19.0 CIRCUIT REQUIREMENTS

19.1 Noise Abatement and Fly – YCAB is a fly neighbourly airfield.

Care must be exercised when flying circuits to ensure that the noise sensitive areas in close proximity to the airfield are avoided. The noise sensitive areas are marked a locality plans attached to this OM. (Appendix B).

19.2 Circuit Procedures---All circuits at Caboolture are Left Hand, **except for Rwy 30 which is Right Hand**. Circuits must be flown in accordance with CASA operational requirements. Refer to the current version of CAAP 166-1.

Pilots must be aware that a mix of various types of aircraft in the circuit, with varying performance characteristics and operational requirements may lead to less than desirable separation and possibly a breakdown in separation. Pilots must be considerate of the differing speed and operating requirements for the variety of aircraft types that operate at YCAB. Good airmanship and courtesy is expected. If you are unsure of the performance and operational

CABOOLTURE AERO CLUB [INC]

CABOOLTURE AIRFIELD OPERATIONS MANUAL

needs of another aircraft in the circuit use your radio and ASK. Refer to the current version of CAAP166-2.

Remember gliders and motor gliders operating “engine off” have right of way in the circuit.

The following information is provided as a guide on some of the differences between the various performance and operational requirements of various aircraft types. For more information on each of the aircraft types that operate at Caboolture consult the Caboolture Aero Club’s web site at <https://cabooltureaeroclub.com.au/>

(a) General Aviation

GA aircraft are generally heavier and faster, sometimes significantly faster, in circuit than recreational and other sport aviation aircraft and include warbirds. Single engine and small twin engine GA aircraft are expected to conduct a circuit at 1,000’ AGL and within gliding distance of the operational runway. Warbirds frequently operate from YCAB and conduct formation flying from and in the vicinity of YCAB.

A high volume of GA helicopter traffic can be expected at YCAB on any day of the week. Helicopters are permitted to conduct circuits as low as 500’ AGL. Do not expect that a helicopter will always conduct a standard circuit at the same height as other GA aircraft. Also refer to sub section 10.6.

(b) RAAus Registered Recreational Aircraft

The performance and operational requirements of recreational aircraft can vary from high drag, slow airspeed to low drag, high airspeed.

Unless the PIC advises otherwise a RAAus registered aircraft will conduct a standard GA circuit. Usual approach speed on final is 50 to 60 kts. RAAus registered aircraft are also required to remain within gliding distance of the airfield while in the circuit. High drag, slow speed aircraft (<50kts) are permitted to conduct circuits at 500’ AGL so as not to delay other traffic in the circuit.

(c) Gliding and Motor Gliders

Gliders at YCAB are aerotowed to launch height behind a 260hp Piper Pawnee. The Pawnee pilot is the pilot in command of the tug/glider combination and will broadcast the combinations intentions at the time of lining up with the glider on tow. You can expect the combination to climb to a minimum of 500’ AGL on runway heading before making a turn. Once having reached 500’ AGL the tug pilot will adopt a climb pattern up wind of the airfield and so as to avoid conflict with GA circuit traffic and noise sensitive areas. The tow pattern will be such that in the event of a "rope break" the glider will always be in a position to return safely to the airfield. The glider can release the tow rope from the Pawnee at any time while under tow up to 3,500AGL.

Gliders will typically (weather permitting) commence a circuit on the downwind leg of the circuit at a height of approx. 1000’ AGL and at a speed of 60kts (plus or minus 10 knots).

Depending upon the gliders performance they may fly relatively closer or wider in the circuit than a powered aircraft. Remember, once a glider has commenced a circuit it must land and will continue to loose height in the circuit. A glider in the circuit has right of way.

CABOOLTURE AIRFIELD OPERATIONS MANUAL

Gliders are flown in the circuit exclusively by management of the gliders performance and rate of descent relative to a nominated aiming point on the selected runway.

You can expect a glider to be established on a stabilised final approach between 500' and 300' AGL depending on the wind conditions. Gliders are fitted with powerful approach control aids (airbrakes) and are capable of steep approaches and high rates descent. Gliders can be flown and landed with a high degree of accuracy in relation to speed, runway heading and landing area.

Motor gliders in general have the same performance attributes as a RAAus aircraft with the engine on (speed and attitude). A motor glider landing with the engine-on is just another powered aircraft.

If a motor glider is operating with the engine-off it will prefix all radio broadcasts with the word GLIDER. A motor glider operating engine-off has speed and operational capabilities the same or very similar to a conventional glider and like any other glider has right of way in the circuit. Refer also to sub section 10.7.

(d) Weight Shift Aircraft, Hang Gliders and Powered Hang Gliders

Weight shift aircraft (Trikes or powered hang gliders) have similar performance to other RAAus registered e.g. high drag, slow airspeed aircraft with the exception that they have very good climbing performance. Also refer to (b) above. Hang gliders and powered hang gliders are not permitted to operate at YCAB.

(e) Powered Parachutes

There are very few powered parachutes operating in Australia. A powered parachute has poor climb performance and a steep glide angle. They have manoeuvrability similar to that of a normal parachute supporting a heavy pilot.

Powered parachutes prefer calm wind conditions to operate. Should they operate from YCAB generally it will be early in the morning or late in the afternoon however, YCAB is not a good site for powered parachute operations because of the unpredictability of the sea breeze and the high volume of other GA and recreational aviation traffic.

(f) Gyrocopters

Gyrocopters can be found in various shapes and sizes from something that is no larger than a single seat full open cockpit (think of a wheel chair with a small engine, an overhead rotor blade and a pusher propeller) to an aerodynamic, fully enclosed two place cockpit. Generally, gyrocopters are high drag, slow airspeed aircraft that are authorised by CASA to conduct circuits as low as 500' AGL. All gyrocopters have one thing in common with helicopters and that is their ability to conduct a very steep, slow ground speed, final approach to land.

When a gyrocopter lines up for take-off there will be a delay between lining-up and the commencement of the take-off roll while the gyrocopter spins up the main rotor blade to the required operating RPM for safe take-off. Similarly, when a gyrocopter lands the landing roll is very short and will always result in a full stop.

The Gyro will then pause for a short period after landing before it moves of the landing strip. This is to allow for the rotor blade to loose energy and rotational speed.

CABOOLTURE AIRFIELD OPERATIONS MANUAL

(g) Skydiving (Parachuting)

YCAB does not have an Australian Parachuting Federation (APF) approved drop zone. Parachute descents onto YCAB are not permitted. From time to time the CAC committee may permit YCAB to be used by a Parachute aircraft (SE piston aircraft) to load PAX and depart.

SE piston parachute aircraft (drop aircraft) are not permitted to operate from YCAB with more than 6 POB. To prevent any possibility of a last light arrival or departure by a parachute aircraft at YCAB, all approved parachute departures must be completed no later than 30 minutes prior to last light. Each parachuting operator must have an airfield access agreement with the CAC or Committee approval prior to operating.

- 19.3 Communication between Users** - Users of the airfield intending to fly multiple circuits, or to conduct emergency procedure training within the circuit, *iaw* an approved syllabus of flying training must make every reasonable attempt to exchange information with operators of other aviation disciplines who will be active in the circuit at the same time. Priority is not implied or given to any specific type of aviation activity.
- 19.4 Altimeter Setting** - Airfield elevation (QNH) is 40' AMSL.
- 19.5 Minimum Airfield Over fly Heights - Go-arounds** - Except in an emergency, in the case of a go-around no class of aircraft shall fly over any person, aircraft parking area, camping area, open area or building upon the airfield, at a height below 300' AGL (340' QNH).
- 19.6 Turning after Take-off** - A minimum turn height of 500' AGL on take-off applies except to specific aviation activities that operate under exemption from CASA regulations. Refer to CAAP 166-1(4.2)
- 19.7 Circuit Congestion** – No member, operator or training provider at YCAB has priority over other users. The PIC of an aircraft must not unreasonably dominate a runway via repeated take-offs and landings or low level operations in-difference to a YCAB based flying school or the Caboolture Gliding Club conducting flying training.

Equally, flying school and gliding club instructors shall be sensitive to the needs of other users requiring airfield access for continuation training, currency and/or air tests.

Fundamental to this outcome is courtesy, common sense and good airmanship. Individual circuit activities that would occupy the circuit area for a significantly longer period of time, adversely impact on other circuit traffic, or traffic wishing to depart YCAB during periods of high circuit activity are not permitted.

- 19.8 Cutting-off in the Circuit** – Can be a cause of frustration and anger in combined operations. For example, pilots of heavier or higher performance aircraft fly wider circuits in comparison with lower performance aircraft. (Refer to CAAP 166.1). The pilot of a slower lower performance aircraft conducting a relatively low and close circuit is able to frustrate the pilot of a faster aircraft by constantly turning onto final in front of the higher performance aircraft and so force a go-around.

CABOOLTURE AIRFIELD OPERATIONS MANUAL

Equally, the pilot of a heavier and faster aircraft must not assume they have priority because they entered the downwind leg of a circuit first and thus overtake existing traffic and push the issue.

Pilots turning on to a “close” base leg are reminded that traffic established on final will be on their right, configured for landing and have right of way. In the case of a gyro it may be higher and in front of you.

Pilots on final are reminded that aircraft on close base legs may be gliders and therefore have right of way. Straight in approaches are not permitted during periods of high traffic activity.

The only solution to a cutting-off problem is communication, courtesy and airmanship. All pilots should be capable of adjusting their circuits, via airspeed, distance, aiming point, or holding, sufficient to give due consideration to the performance or operational requirements of different aircraft in order to maintain separation and facilitate smooth traffic flow.

- 19.9 Pilot Selected Runways** – The pilot in command of an aircraft has the authority to select the runway most suited to the performance and operational requirements for the safe operation of their aircraft however, with combined operations the active runway is usually the one required by aircraft with the poorest cross wind capability. These factors may be less important to pilots of fast, heavy aircraft who are more interested in the length of runway available for safe operations.

All operators at YCAB are advised that any pilot selecting a runway other than the one which is clearly the ‘active’ runway (by virtue of into wind and minimum cross wind component and established circuit traffic), or that has been nominated as the ‘active’ runway by a radio information communication, then such pilot will lose all right of way privileges and shall conduct the landing or take-off procedure such as to give way to, and maintain separation from all other circuit traffic.

NOTE

Runway 24 is not to be used for take-off except in an emergency or inclement weather (Local Government - Notice of Consent section 3(a)(i) rule).

- 19.10 Straight-in Approaches** – are not permitted on Runway 12 or Runway 06. Straight-in approaches are not permitted on Runway 24 or Runway 30 during periods of high traffic activity.

20.0 JOINING CIRCUIT

20.1 Inbound Call -Inbound radio equipped aircraft shall make an initial inbound call 10 nm from the airfield or at a known geographical feature e.g. Bribie Bridge, Glasshouse Mountains.

CABOOLTURE AERO CLUB [INC]

CABOOLTURE AIRFIELD OPERATIONS MANUAL

NOTE

Whenever possible circuit joins that allow the execution of 3 legs of the circuit are to be flown *iaw* with CASA guidance found in the current version of CAAP 166-1.

20.2 Information from a Caboolture Ground Station---From time to time a ground station may be on listening watch e.g. the Gliding Club Operations launch point, or a ground station established for a specific event. This is an information facility, not an authorised UNICOM or air traffic service.

Operational information may be given to inbound aircraft regarding the status of the field if it is believed to be operationally important, e.g. runways have standing water, taxiways too wet to taxi on, kangaroos on runways, gliding operations active, fast aircraft operating in circuit etc.

CABOOLTURE AERO CLUB [INC]

CABOOLTURE AIRFIELD OPERATIONS MANUAL

21.0 MANUAL REVIEW, ERRORS OR OMISSIONS AND USER FEEDBACK

This operations manual (OM) is a living document. Member engagement and feedback is encouraged and welcome. Every attempt has been made to issue this OM without error, omission or conflict with aviation legislation. The OM is provided for the benefit and guidance of all airfield users to facilitate safe operations at Caboolture airfield and to ensure the enjoyment by all aviation participants.

The manual, at times uses assertive language. Where used, assertive language seeks to:

- remind users of their regulatory responsibilities,
- facilitate aviation activities that are conducted safely and consistently;
- comply with the conditions of use of the airfield head lease and Local Government Notice of Consent managed by the Caboolture Aero Club;
- adhere to the club's fly neighbourly obligations and minimise the impact of aircraft operations on the surrounding residential communities;
- ensure the airfield is maintained and operated *iaw* with CASA, State and Local Government requirements;
- ensure the long term viability of YCAB as a recreational aviation facility; and
- facilitate the safe and quiet enjoyment of the airfield and its facilities by members, access agreement holders and visitors.

If a member, access agreement holder or other airfield user has a suggestion for inclusion in or amendment to this OM manual please make contact with the Club Secretary at secretary@cabooltureaeroclub.com

Issued by Caboolture Aero Club Management Committee
July 2020

Date for Review: July2022

CABOOLTURE AERO CLUB [INC]

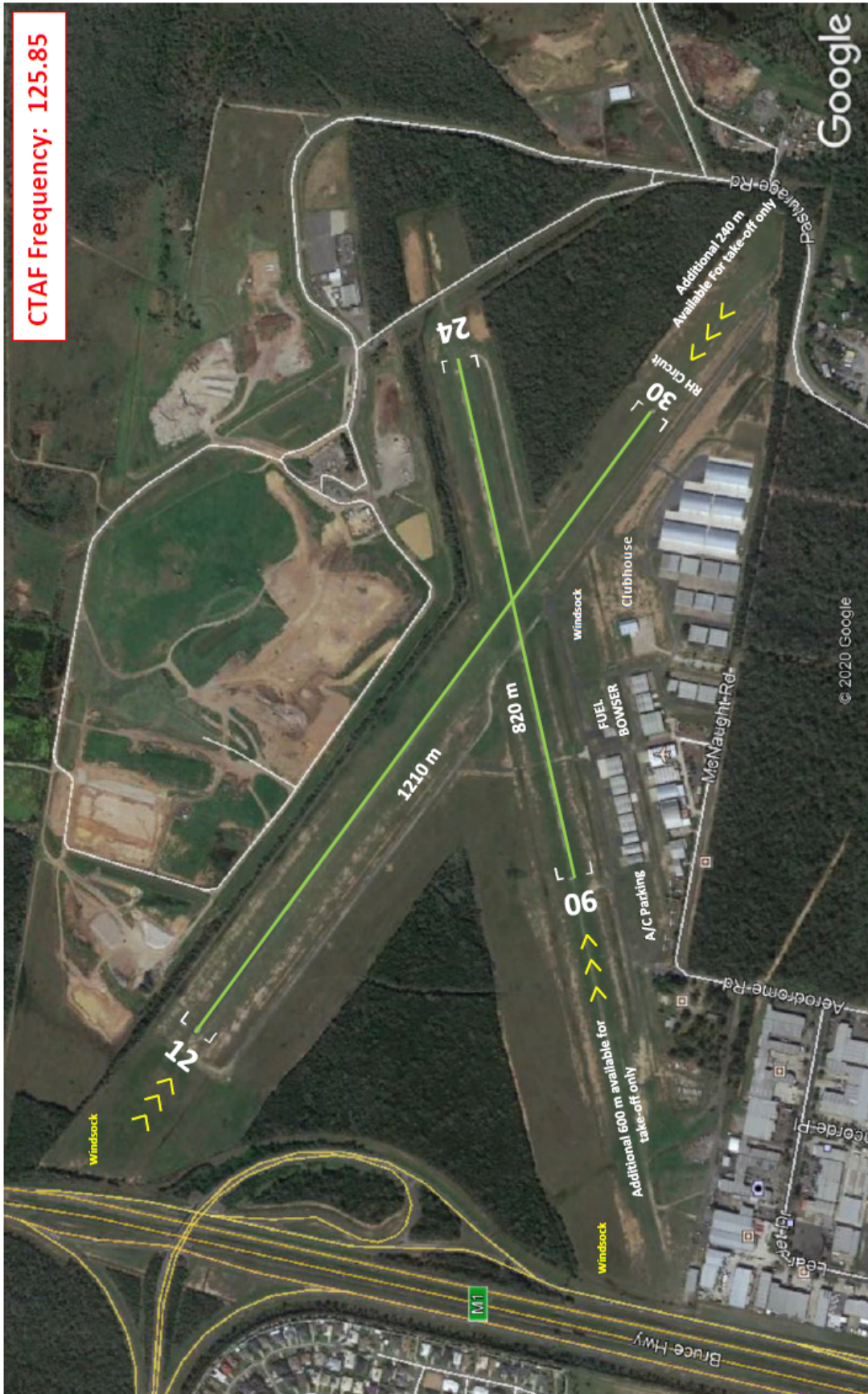
CABOOLTURE AIRFIELD OPERATIONS MANUAL

Appendix A – Airfield Plan

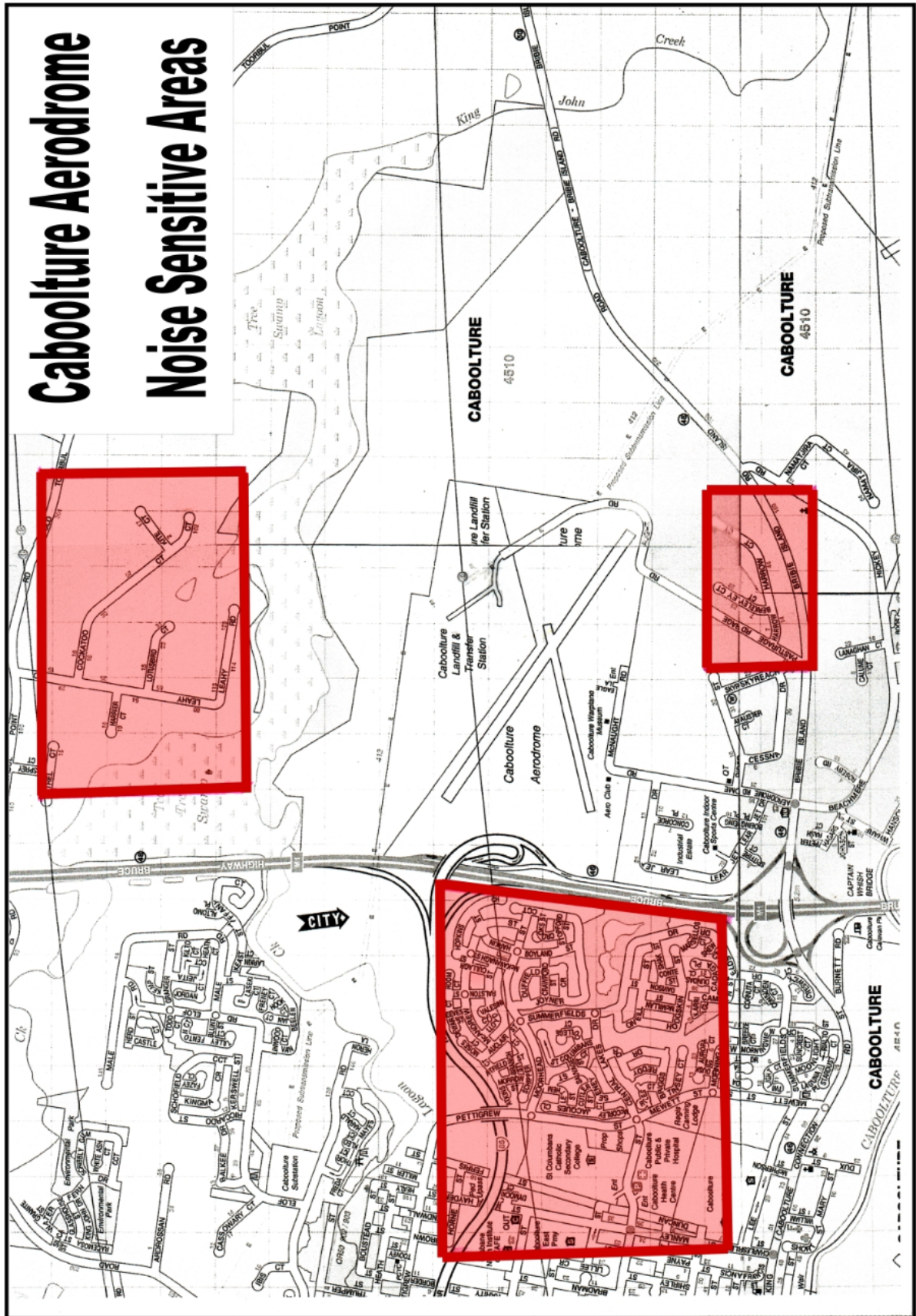
Reference: Google Earth

CTAF Frequency: 125.85

ANNEXURE A – Caboolture Airfield Plan



Appendix B- Plan of Local Noise Sensitive Areas



Appendix C – YCAB Quick Reference Handout (YCAB - QRH)

1. Circuit Direction

All runways except RWY30 are left hand circuits. RWY 30 is right hand circuit.

2. CTAF Frequency – 125-85

3. Preferred Runway

The active runway is the RWY most into wind and the Rwy being used by other aircraft at the time you make your YCAB taxi call or inbound radio broadcast. Other RWYs may be used with radio notification to other traffic and with priority given to other aircraft already established in the circuit of the runway in use (the active RWY).

RWY 24 must only be used when wind conditions dictate. If RWY 24 is used for take-off aircraft are required to turn left at 500' AGL or before the Bruce Hwy, whichever occurs first, and then track parallel to or along the Bruce highway.

4. Straight-in Approaches

Are not permitted on Runway 12 or Runway 06.

Straight-in approaches are not permitted on Runway 12 or Runway 30 if other aircraft are in the circuit.

5. Noise abatement and Fly Neighbourly Requirements

Circuits must be flown so as to avoid noise sensitive and built up areas to the north, west and south. Intersection departures on any runway are not permitted. Take-off run is permitted with caution to commence in the undershoot area of RWY 06 and RWY 30 to reduce the size of the aircraft noise footprint on departure. Refer also to Annex B and D.

6. Night operations

Not permitted

7. Circuit procedures

In accordance with the current version of CAAP 166-1, AIP and ERSAs instructions

Issued by Caboolture Aero Club Management Committee: July 2020

Date for Review – July 2022

Annexure D - AIRPORT FLY NEIGHBOURLY COMMITMENT

AIRFIELD MANAGEMENT STATEMENT

Permission to operate at YCAB is conditional of the participant understanding and complying with the Caboolture Aero Club fly neighbourly obligations.

As the airfield management group the Caboolture Aero Club will:

- ensure that members and other users are aware of local environmental noise issues by publishing educational material on our website and in our operations manual;
- adhere to guidance published by CASA in CAAP 166-1. Current revision is CAAP 166-1(4.2);
- display material for members and other airfield users on the CAC website; and
- monitor member compliance with the CAC OM to minimize unnecessary flight over built up areas

To achieve agreed objectives the Caboolture Aero Club has:

- developed and published procedures to ensure **aircraft take-offs** begin no later than the threshold of the runway in order to maximise height gain after take-off;
- developed and published procedures to ensure **aircraft do not land** before the marked threshold of any runway in order to maximise height over built up areas on approach to a runway;
- published requirements for early turns after take-off to avoid built up and noise sensitive areas;
- encouraged pilots to fly widened circuits, when safe to do so, to avoid built up and noise sensitive areas;
- nominated preferred runways for take-off;
- limited engine failure training to specific runways;
- not approved fixed wing pure jet operations;
- published an OM procedure's quick reference handout (QRH) for pilot briefing on the CAC website;
- referenced the OM QRH, in the YCAB notes section of ERSAs for visiting pilots;
- placed limitations on low level circuit operations;
- a process to follow up community inquiries and complaints about noise issues; and
- communicated with local authorities in relation to regulatory and community service obligations.

Helicopter Operations

As members of the Caboolture Aero Club or signatories to an airfield access agreement helicopter users are committed to Fly Neighbourly operations. They commit to undertake their operations in a manner which is considerate to local residents whilst maintaining safe operations of the helicopters in accordance with all Civil Aviation Safety Regulations and the requirements of this OM.

In addition to the above objectives helicopter operators (private and commercial) are expected to adhere to the following principles while operating at YCAB:

- Compliance with noise abatement procedures included in ERSA and the CAC Operations Manual.
- Plan all flights to minimise flight below 1500ft over built up areas.
- Avoid tight manoeuvres and turns while operating helicopters over populated areas.
- Oval circuits at 500ft for helicopters are to be operated within the airport boundary.
- Self-regulate and ensure that no itinerant helicopter training occurs between the hours of 1900hrs and 0700hrs.

Issued by Caboolture Aero Club Management Committee: June 2020

Date for Review - July 2022

Caboolture Airfield Emergency Response Plan

Section 1	Introduction
Section 2	Preparing for Emergencies
Section 3	Responding to Emergencies
Section 4	Communications
Section 5	Recommencement of Operations
Section 6	Post Incident Review
Section 7	Airfield Services and Facilities Diagram

1. INTRODUCTION

This plan has been developed as a supplement to the Caboolture Airfield Operations Manual. It is established to provide guidelines to be followed in the event of any of the following events:

- Aircraft incident
- Aircraft accident
- Fire or other emergency
- Natural disaster
- Unlawful action affecting operations

They are prefaced on the state and local emergency services being activated by eyewitnesses who would contact emergency services as a first action. The incident site will subsequently be under the control of an incident commander appointed by emergency services after their activation. The role of CAC in such matters is to ensure the safety and security of airfield operations, and of Club and members' property.

1.1 Authority to Implement

Responsibility for the implementation of this plan rests with the Caboolture Aero Club President, or Airfield Reporting Officer. Upon implementation of the plan, a Response Team Leader shall be nominated.

1.2 Implementation

Implementation of this plan will occur after initial assessment of the situation. This assessment should consider the following:

- Aircraft or vehicle type involved
- Specific location of the incident
- Accessibility
- Weather and climatic factors
- Number of passengers
- Nature and extent of any injuries

CABOOLTURE AIRFIELD OPERATIONS MANUAL

- Any hazardous cargo or biological hazard
- Security of the site

It will be necessary for those involved in the implementation of this plan to exercise initiative, flexibility and judgement in addressing the particular situation.

The primary concern shall be the safety people and security of airfield operations.

The initial assessment should also consider the seriousness of the incident and determine if flight operations should continue or be suspended.

2. PREPARING FOR EMERGENCIES

The key to successfully responding to any challenging situation is preparedness. Training, knowledge, communication and resource management all contribute a satisfactory outcome.

2.1 Intent

A variety of circumstances may create risks to persons, aircraft or assets. The intent of planning a response to an incident occurring on or near the airfield is to ensure that appropriate resources are available to respond to any such incident.

Planning must necessarily focus on:

- Management control of the situation
- Co-ordination of resources, including those sourced externally

Effective and clear communication is essential in achieving a successful outcome, as is co-operation between all persons and agencies involved.

3. RESPONING TO EMERGENCIES

The primary focus will be on:

- Notification of emergency services
- Provision of initial first aid assistance to those injured
- Facilitating access to the site by emergency services
- Safety of those involved in recovery actions
- Impact on other airfield users be minimised

3.1 Response Team Composition

The minimum requirement for a response team shall be:

- Airfield Reporting Officer, who is be equipped with a mobile telephone and a hand-held VHF radio. **The Club emergency contact number is mobile telephone 0488 922 245**
- Response Team Leader, nominally the President, who shall be equipped with keys to all airfield access gates and a mobile telephone. The Response Team Leader has the authority to combine, or expand upon, these functions as required.

3.2 Response Team Roles

The role of each team member should broadly include the following:

Response Team Leader:

The Team Leader shall ensure that emergency services are directed to the incident site via the safest and most practical route, having regard for other airfield activities and natural hazards such as concealed ditches or soft surfaces. Particular care should be exercised whenever emergency vehicles are to cross any active runway.

In the absence of gate keys initially, the electric gate may be controlled by any available person at the gate with a key card.

The Team Leader shall appoint additional response team members as deemed necessary, and in the case of a protracted recovery operation, arrange for replacement team members, including facilitating their access to the airfield.

The Team Leader shall also decide in consultation with emergency services whether airfield operations should be limited or suspended, and when such limitations or suspension shall be lifted.

The decision to suspend airfield operations may include or exclude helicopter operations, refuelling operations, and airfield maintenance, depending upon the proximity of these operations to the incident site, and the likelihood of these operations interfering with access by emergency services.

Note: Emergency Services aircraft are excluded from complying with airfield operational restrictions.

It shall be the responsibility of the Team Leader to remain at the incident site until rescue and recovery operations are complete, or until such time as relieved by a replacement Team Leader.

Airfield Reporting Officer:

The Airfield Reporting Officer shall be required to implement any restriction or suspension of airfield operations to enable rescue and recovery operations to proceed. This shall be affected by periodic broadcast on the CTAF frequency, as well as by telephone notification to access agreement holders and flying schools.

If the decision is made to suspend airfield operations, the Airfield Reporting Officer is responsible for placing white crosses on the affected runways, and their removal before the resumption of operations.

4. COMMUNICATIONS

Effective communication is the key to a successful response. Primary communications will rely on mobile telephones and a hand held VHF radio.

First contact with emergency services must include identification of the most suitable gate to access the incident site.

4.1 Media Communication

The Club President is the only person approved to make comment to media on behalf of the Aero Club. Any requests for comment on the specifics of an incident should be referred the appropriate emergency services spokesperson. Members assisting with the response must not make personal comments about the incident to the media.

4.2 Communication with other airfield users

The primary means of advising aircraft of any limitation or suspension of operations should be by broadcast on the CTAF frequency utilising VHF radio. Secondary means of notification to aircraft should be by situating white crosses on the affected runways or in the signal pad near the primary wind direction indicator.

5. RECOMMENCEMENT OF AIRFIELD OPERATIONS

The decision to re-instate normal operations at the airfield shall be made by the Team Leader, after consultation with emergency services.

The decision should only be made after a thorough inspection of the airfield to ensure that there is no hazard to other airfield users, and that any wreckage or debris has been removed from operational areas. A general inspection of the airfield should also be carried out to ensure that all operational areas are serviceable. Particular care should be taken to examine the operational surfaces for impact damage or damage by heavy vehicles. Maintenance to such damaged areas must be complete prior to return to operation use.

Any changes in operational status, such as temporary closure of any runway or taxiway, will be clearly defined by unserviceability markers.

6. OPERATIONAL REVIEW

Post-incident reviews are an important tool enabling procedures and preparedness to be strengthened so that future incidents are responded to successfully.

6.1 Debriefing of Response Team Members

After resumption of normal operations, the Team Leader shall convene a de-briefing of all response team members. An invitation will be extended to a representative of the Emergency Services Groups that attended the incident. This should ideally be conducted at a venue away from the incident site, and should afford each team member an opportunity to reflect on their role and offer suggestions as to how procedures in this ERP might be improved. The effectiveness and suitability of resources should also be considered.

6.2 Aero Club Committee Review

At the earliest practical opportunity, the Aero Club President should convene a meeting to review operational procedures and resource allocation, in view of the experience gained. Depending upon the circumstances of the incident, feedback from external agencies involved in the response should be invited.

6.3 Amendments to the Emergency Response Plan

Following any operational review, the Airfield Emergency Response Plan shall be amended to incorporate changes, and the revised plan circulated accordingly.

CABOOLTURE AERO CLUB [INC]

CABOOLTURE AIRFIELD OPERATIONS MANUAL

7. Airfield Services and Facilities Diagram

